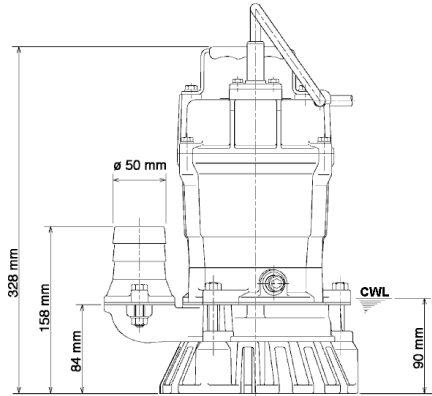
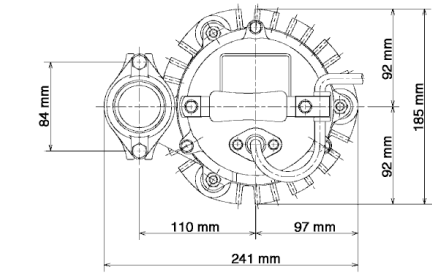
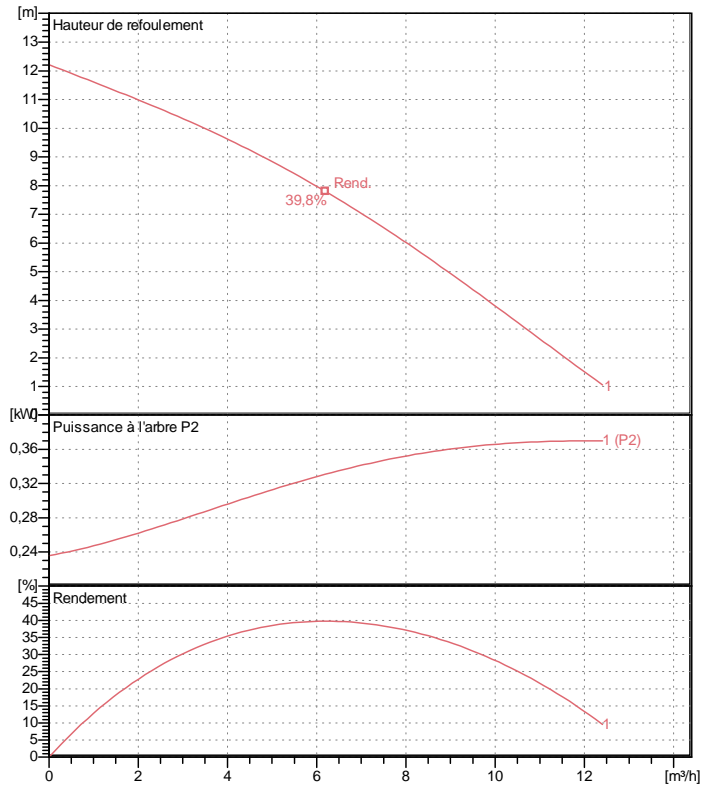


Feuille de données HS2.4S-52



HS2.4S-52 (A-09152-1)

CWL: Continuous running water level



specification

electric submersible pump
 Indice de protection IP 68
 Depth of submersion: max. 20 m
 Type of impeller: semi-vortex
 Max. solid handling: 7 mm
 Suitable for:
 rain water, ground water, sand

Electric Motor

Dry-type submersible induction motor
 Classe d'isolation E 2Pôles 2723 1/min
 Mode de démarrage Direct
 Tension nominale 230 V 50 Hz 1~
 Power uptake 0,58 kW
 Puissance nominale 0,40 kW
 Intensité nominale 2,6 A
 Start current: 6,8 A

Electric Cable

H07RN-F 3Cx1mm²

Motor Protection

Miniatur protector in windings
 (snap-action bi-metal device)

Garniture d'arbre

Double mechanical seal in oil bath
 additional lubrication by oil lifting device
 Primary seal
 Silicon carbide on silicon carbide
 Secondary seal
 Carbon on ceramic

Bearings

Shielded ball bearings, maintenance-free

Materials

Roue	Urethane rubber
Pompe boîte	FCD700 (EN-GJS-700-2)
Motor Frame	Aluminium die casting
Shaft	Stainless steel SUS403

Bride de refoulement

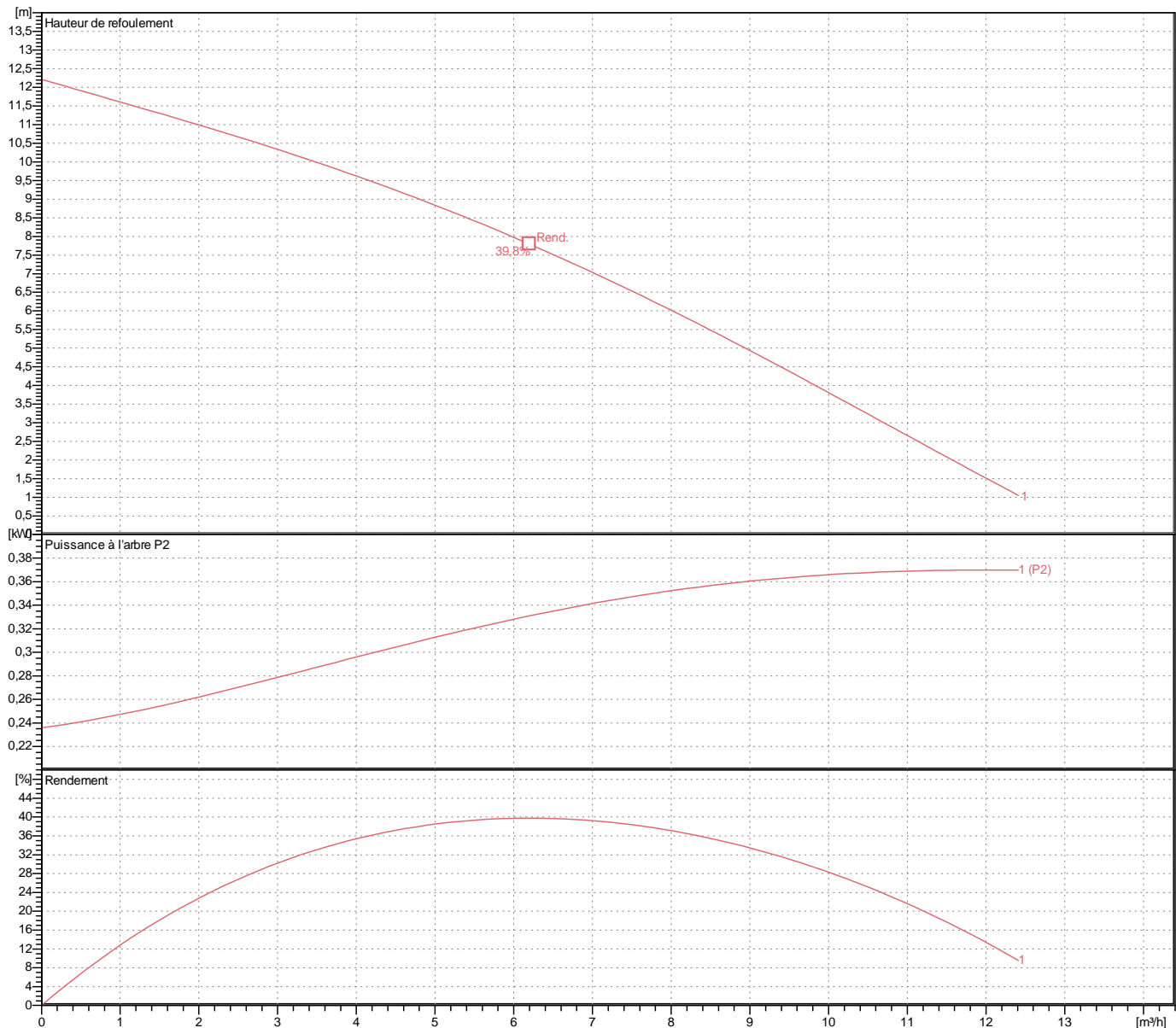
2" (50mm) BS-Coupling (threaded flange)

Weight

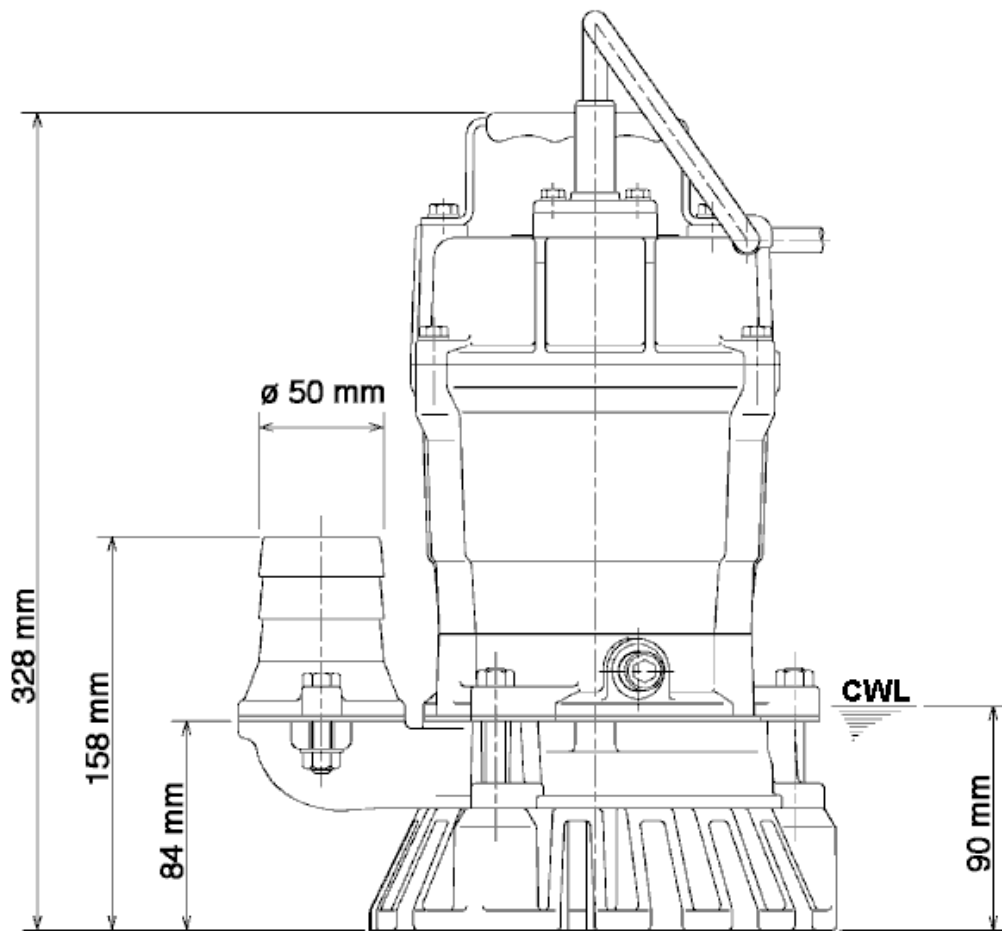
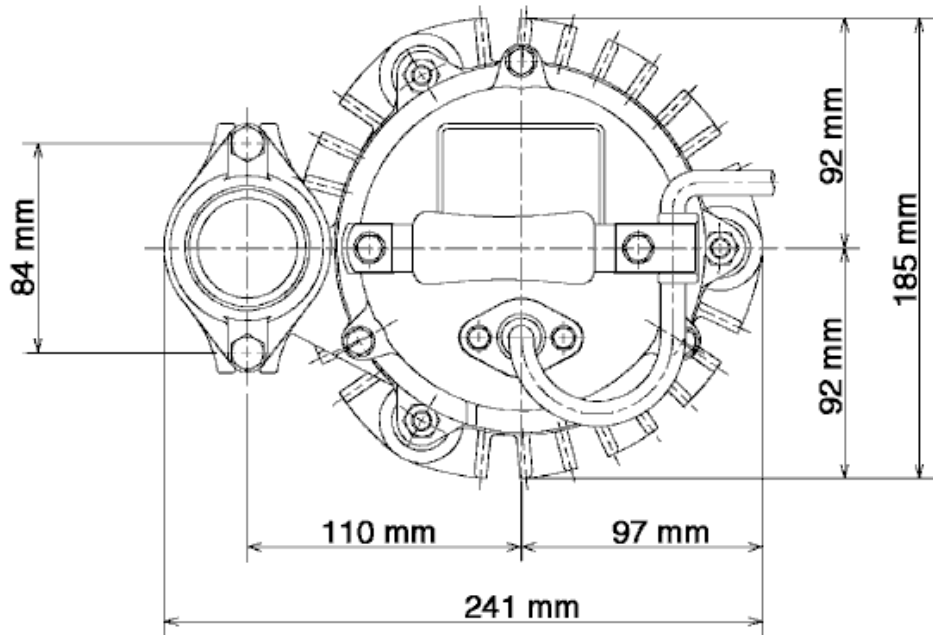
11,3 kg (dry weight of the pump only without cable)

courbe de puissance HS2.4S-52

Refoulement	2"
Hauteur de refoulement	0 m
Débit	0 m ³ /h
Puissance nominale	0,40 kW
Puissance absorbée	0,58 kW
Phases	1~
Voltages	230 V
Fréquence	50 Hz
Intensité nominale	2,6 A
Intensité de démarrage	6,79 A
Nombre de pôles	2
Vitesse	2723 1/min
Mode de démarrage	Direct
Classe d'isolation	E



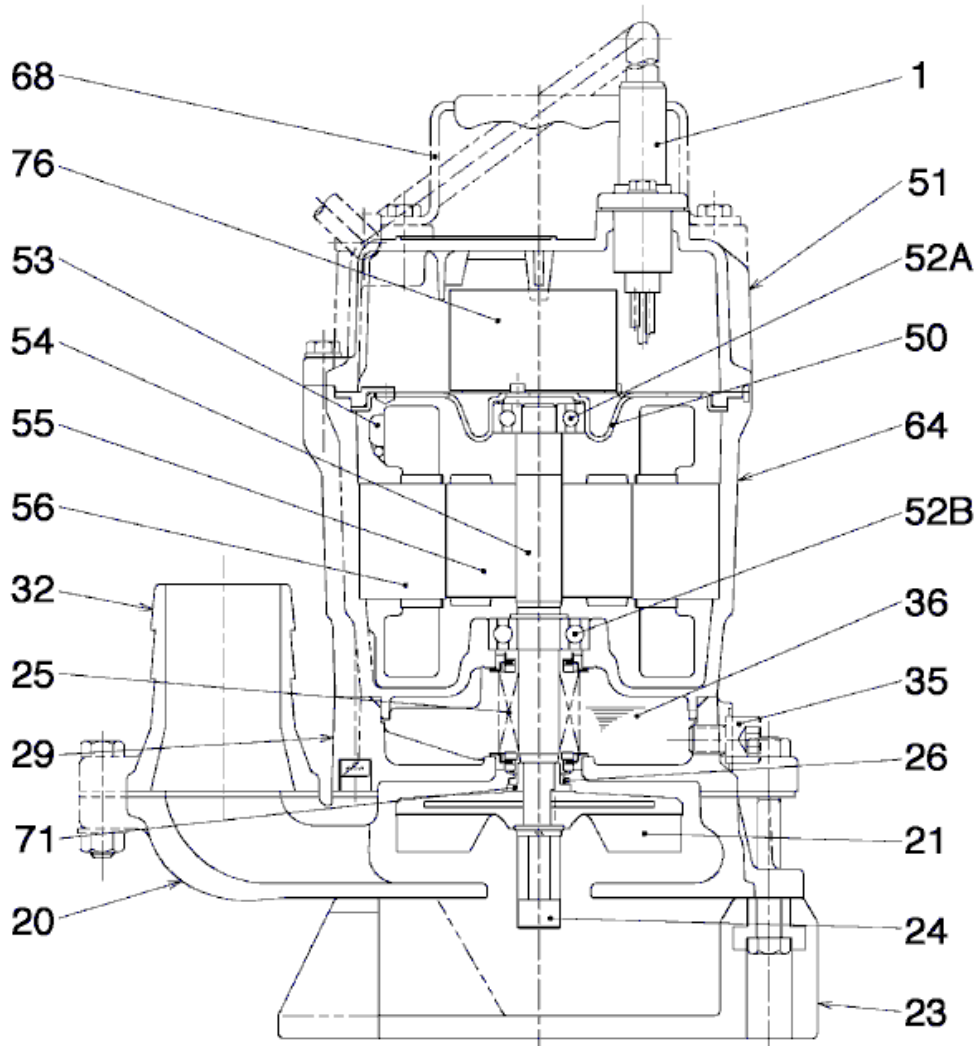
Dimensions HS2.4S-52



HS2.4S-52 (A-09152-1)

CWL: Continuous running water level
LWL: Lowest running water level

Sectional drawing HS2.4S-52



HS2.4S-52 (A-09153-1)

N°.	Désignation	Remarque	N°.	Désignation	Remarque
1	Electric Cable	H07RN-F3Cx1mm=x10m	54	Shaft	Stainless steel SUS403
20	Pompe boîte	FCD700 (EN-GJS-700-2)	55	Rotor	.
21	Roue	Urethane rubber	56	Stator	.
23	Strainer	PVC	64	Motor Frame	Aluminium die casting
24	Agitator	Sintered alloy	68	Handle	Steel plate / natural rubber
25	Mechanical seal	W-14VL	71	Manchon protecteur arbre	Stainless steel SUS304
26	V-ring	Butadiene-acrylonitrile-rubber	76	Condenser	.
29	Oil casing	FC200 (EN-GJL-200)			
32	Pressure socket	Aluminium die casting			
35	Oil screw	Stainless steel SUS304			
36	Lubricant	Turbine oil (ISO VG32)			
50	Motor cover	Steel plate			
51	Main cover	Aluminium die casting			
52A	Upper bearing	6201ZZC3			
52B	Lower bearing	6202ZZC3			
53	Motor Protector	.			